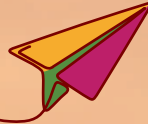




**MESMAC**  
INTERNATIONAL CONFERENCES

Since 2016 | Edition 9 | [www.mesmac.in](http://www.mesmac.in)



# MIGRATION

Transitions | Traits | Trajectories

7 | 8 | 9 JANUARY 2025



MES MAMPAD COLLEGE (Autonomous)

Mampad College P.O., Malappuram Dist., Kerala, India - 676 542.

[info@mesmampad.org](mailto:info@mesmampad.org) | [www.mesmampadcollege.edu.in](http://www.mesmampadcollege.edu.in)





MES Mampad College is a rural Autonomous institution run by Muslim Educational Society offering UG, PG and Research Programmes. Ever since its establishment in 1965, the college has scaffolded educational uplift and subsequent empowerment of the Malabar region in Kerala. Initiated in 2016 as a Golden Jubilee Platform in which cross disciplinary dialogues are made possible, MESMAC International Conferences brought together the voices of thought leaders, academics and scholars from all over the world to the threshold of the campus. The last eight editions of MESMAC firmly grounded its reputation as the leading college conference in South India.

MES Mampad College is organizing the ninth edition of MESMAC International Conference on 7th, 8th and 9th January 2025 on the theme **MIGRATION: TRANSITIONS, TRAITS, TRAJECTORIES**. The Conference will raise the benchmark further, by collaborating quality educational institutions in the country and abroad. With over 4000 papers presented and 38 books published with ISBN, MESMAC International Conference is attracting attention for what a college can make happen.

## **Migration: Transitions, Traits, Trajectories**

The MESMAC International Conference 2024-25 will explore the theme: **Migration: Transitions, Traits, Trajectories**, continuing its tradition of addressing timely and impactful topics. This theme holds profound significance within the realms of social science, literature, and the humanities, offering rich avenues for scholarly exploration and interdisciplinary dialogue. Renowned for its intellectual rigor, diverse participation, and vibrant academic discussions, the

conference has, over the years, become a distinguished platform for exploring key global issues.

Migration, in its broadest sense, refers to the movement of individuals or groups from one place to another, often driven by various socio-economic, political, or environmental factors. This phenomenon, as old as human civilization itself, shapes the cultural, economic, and social landscapes of both the origin and destination areas. Migration can be voluntary or forced, temporary or permanent, internal or international. While historically, migration has been linked to survival needs, modern-day migration is largely influenced by globalization, economic opportunities, and the quest for better living conditions. In Kerala and India, the phenomenon has gained attention due to a significant number of students and professionals seeking opportunities abroad, motivated by factors like higher education, career prospects, and personal freedom. Migration, therefore, has become a dynamic topic of discussion that spans multiple disciplines, reflecting its wide-reaching impact.

## **Social Science/Humanities/Literature**

Migration, as a social phenomenon, deeply affects individuals and communities. In Social Science, it is analyzed in terms of its impact on identity, belonging, and cultural integration. Migration often leads to the transformation of societal norms and values, affecting both the migrants and the host societies. In Indian scenario, migration is shaping new narratives in literature, as writers explore themes of displacement, nostalgia, and the search for home. Moreover, the humanities examine how migration affects cultural exchanges and the evolution of collective memories. Migration is also linked to the socio-political landscape, with individuals seeking freedom from increasing social and moral audits, driven by more liberal values and lifestyles abroad. Thus, migration becomes a focal point for analyzing transitions in individual identities and collective societal change.



**MESMAC**  
INTERNATIONAL CONFERENCES

Since 2016 | Edition 9 | [www.mesmac.in](http://www.mesmac.in)



## Science

The scientific study of migration involves understanding the biological, environmental, and technological factors that influence movement. Migration patterns are often shaped by climate change, natural disasters, and technological advancements in transport and communication. Scientists study how changes in the environment or access to resources prompt human mobility. The growing effects of climate change, such as flooding and coastal erosion, are becoming significant push factors for migration. Additionally, the availability of advanced healthcare and technology abroad attracts individuals seeking better living conditions. Migration is connected with various walks of science, including mathematical modeling, the physical dynamics of transportation, and environmental chemistry, which all contribute to understanding the complex factors driving migration. The scientific perspective thus frames migration within the context of human survival, technological progress, and environmental challenges.

## Commerce / Economics

From an economic perspective, migration is closely linked to labour markets, remittances, and the global economy. Migration often results in a redistribution of human capital, benefiting both the origin and destination countries. Individuals migrating abroad are part of a larger global workforce seeking better economic opportunities. Commerce and economics examine the impact of migration on labor supply, demand for skilled workers, and the economic integration of migrants into host countries. Additionally, migration influences economic policies as nations develop strategies to attract or manage migrant workers. Thus, migration is a critical factor in understanding global economic trends, human capital movement, and financial stability.



### \*Submission Guidelines

The word files submitted should be named in the format:

'Your Abstract Title\_your Area'

eg: - Post colonialism\_Literature, Nanomaterials\_Physics etc.

Author guidelines, paper template and all other submission activities including submissions, reviews and notifications for this conference will be electronic.

Please visit the conference website for detailed subject-wise list of topics on which abstracts may be submitted. Papers may be related to, but not wholly restricted to, the listed topics. Selected papers will be published in the College journal.

To register and for submission of abstracts,  
please visit [www.mesmac.in](http://www.mesmac.in)

### Important dates

Last date for submission of abstracts : **30 November**  
Intimation of acceptance : **Within one week**  
Conference dates : **7,8,9 January 2025**

### Important Note

Early submission/registration is highly encouraged to avoid last minute disappointments.

	Students	Research Scholars & Guest Faculty	Faculty Members	International Participants
Participation	Rs. 600	Rs. 700	Rs. 700	20 USD
Presentation	Rs. 800	Rs. 1250	Rs. 1500	25 USD
Presentation & Publication	Rs. 1000	Rs. 1500	Rs. 2500	35 USD

### ACCOUNT DETAILS

Beneficiary	: MESMAC International Conferences	Account Number	: 39855888448
Name of the Bank	: SBI, Nilambur	IFSC Code	: SBIN0070194
Branch Code	: 70194	SWIFT Code	: SBININBB

**Payment Mode: Money Transfer**

If you still have questions, please feel free to call

Abdul Wahid K  
9544223283

Dr. Abdurahman M  
98462 28943

Dr. Sajithamohan M  
96450 56243



## MES MAMPAD COLLEGE (Autonomous)

Affiliated to University of Calicut

Mampad College P.O., Malappuram Dist., Kerala, India - 676 542.

[info@mesmampad.org](mailto:info@mesmampad.org) | [www.mesmampadcollege.edu.in](http://www.mesmampadcollege.edu.in)